

M6PR Antibody
Rabbit mAb
Catalog # AP92463**Specification**

M6PR Antibody - Product Information

Application	WB, FC, ICC
Primary Accession	P20645
Reactivity	Rat
Clonality	Monoclonal
Other Names	
CD MPR; M6pr; Man6PR; MPR46; MPRD; SMPR;	
Isotype	Rabbit IgG
Host	Rabbit
Calculated MW	30993 Da

M6PR Antibody - Additional Information

Dilution	WB~~1:1000 FC~~1:10~50 ICC~~N/A
Purification	Affinity-chromatography
Immunogen	A synthesized peptide derived from human M6PR
Description	Transport of phosphorylated lysosomal enzymes from the Golgi complex and the cell surface to lysosomes. Lysosomal enzymes bearing phosphomannosyl residues bind specifically to mannose-6-phosphate receptors in the Golgi apparatus and the resulting receptor-ligand complex is transported to an acidic prelysosomal compartment where the low pH mediates the dissociation of the complex.
Storage Condition and Buffer	Rabbit IgG in phosphate buffered saline , pH 7.4, 150mM NaCl, 0.02% sodium azide and 50% glycerol. Store at +4°C short term. Store at -20°C long term. Avoid freeze / thaw cycle.

M6PR Antibody - Protein Information**Name** M6PR**Synonyms** MPR46, MPRD**Function**

Transport of phosphorylated lysosomal enzymes from the Golgi complex and the cell surface to lysosomes. Lysosomal enzymes bearing phosphomannosyl residues bind specifically to mannose-6-phosphate receptors in the Golgi apparatus and the resulting receptor-ligand complex is transported to an acidic prelysosomal compartment where the low pH mediates the dissociation of the complex.

Cellular Location

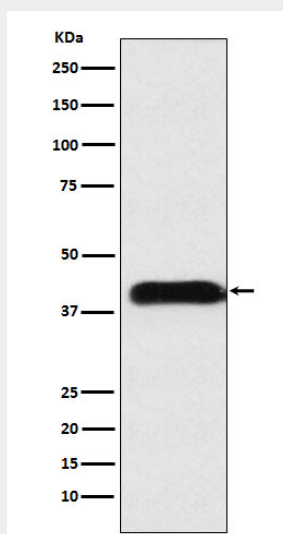
Lysosome membrane; Single-pass type I membrane protein

M6PR Antibody - Protocols

Provided below are standard protocols that you may find useful for product applications.

- [Western Blot](#)
- [Blocking Peptides](#)
- [Dot Blot](#)
- [Immunohistochemistry](#)
- [Immunofluorescence](#)
- [Immunoprecipitation](#)
- [Flow Cytometry](#)
- [Cell Culture](#)

M6PR Antibody - Images



Western blot analysis of M6PR expression in A549 cell lysate.